

# Diffrient World Specification Guide

Humanscale®

## Table of Contents

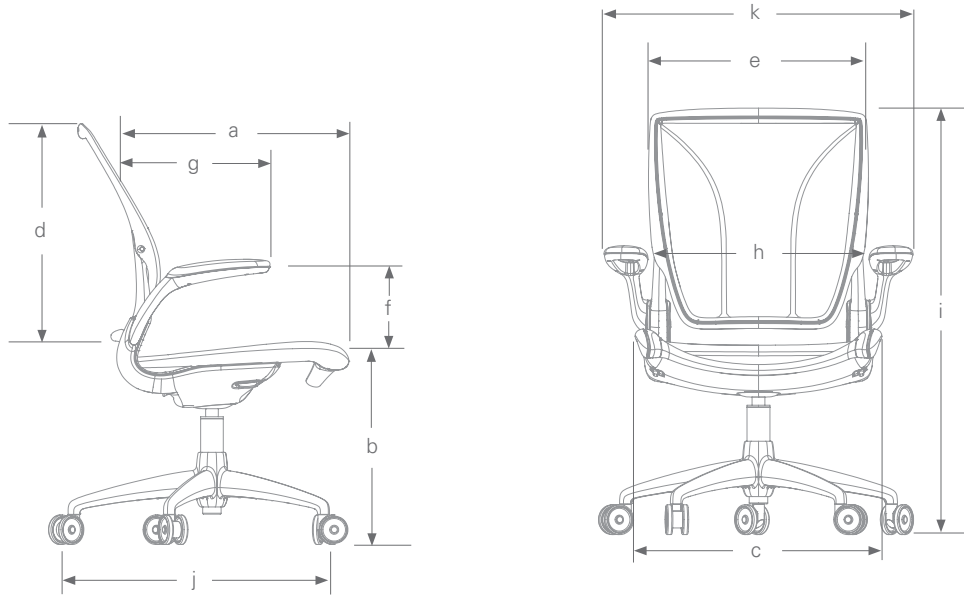
Diffrient World Key Selling Features .....	1
Dimensions and Specifications.....	2
Code Buildout Example .....	3
Armrest Options .....	4
Frame Color .....	5
Cylinders .....	6
Casters .....	7
Fire-Proofing .....	8
Base & Shipping Options.....	9
Textiles.....	10

# HUMANSCALE DIFFRIENT WORLD CHAIR

## Key Selling Features

FEATURES	DIFFRIENT WORLD
<b>Tri-panel mesh back design</b> <ul style="list-style-type: none"> <li>• Shapes to the body &amp; provides optimal support</li> <li>• Non-stretch mesh back does not require additional lumbar device</li> </ul>	Yes
<b>Weight-sensitive, self-adjusting recline</b> <ul style="list-style-type: none"> <li>• Self locking recline mechanism automatically provides support and is free of knobs and levers.</li> </ul>	Yes
<b>Pivoting backrest</b> <ul style="list-style-type: none"> <li>• Automatically adjusts as user moves to support changing needs of user's back</li> </ul>	Yes
<b>Waterfall seat edge</b> <ul style="list-style-type: none"> <li>• Designed to not hit back of the knees for enhanced comfort</li> </ul>	Yes
<b>Modular design</b> <ul style="list-style-type: none"> <li>• Helps with easy upgrading and replacements of components.</li> </ul>	Yes

SPECIFICATIONS	DIFFRIENT SMART
<b>Scope of users with standard options</b> <ul style="list-style-type: none"> <li>• Fits more than 95% of the office population</li> </ul>	5'0" Woman to 6'4 Man 100 to 300 lbs
<b>Backrest recline</b> <ul style="list-style-type: none"> <li>• A wide range of recline allows for increased movement.</li> </ul>	17 degree recline plus 8 degree backrest tilt
<b>Weight</b> <ul style="list-style-type: none"> <li>• Less weight means less material which is better for shipping &amp; environment.</li> </ul>	28lbs with arms, 24lbs without arms
<b>Warranty</b> <ul style="list-style-type: none"> <li>• One of the longest warranty offerings in industry.</li> </ul>	15 years, 24/7 Warranty Fabric/Cushions/Arm pads: 5 years, Single-Shift



CODE	DESCRIPTION	MEASUREMENT
a	seat depth <i>(from face of lumbar to front of seat)</i>	15.70" - 18.25"
b	seat height <i>(from floor to compressed front center of seat cushion)</i>	16.4" - 21.8" standard chair 13.4" - 17.9" low chair 16.1 - 21.1 tall chair 19.63" - 27.63" high cylinder with 18" foot ring
c	seat width	20.20"
d	backrest height <i>(from seat cushion to top of backrest)</i>	22.5"
e	backrest width	16"
f	armrest height <i>(from compressed seat cushion to top of armrest)</i>	9.50" fixed 7.20" - 10.75" adjustable
g	armrest length <i>(from face of lumbar to front of armrest)</i>	8.40"
h	distance between armrests	18.75"
i	height	37" - 41.8 standard 35.1" - 38.6" low chair 37" - 42" tall chair 40" - 48.1" high cylinder with 18" foot ring chair 35.4" - 37.6" return to height cylinder chair
j	base diameter	25" (610mm)
k	chair width	25.75" (with arms) 21" (without arms)

SCOPE OF USERS
<ul style="list-style-type: none"> <li>Conference/Task chair fits 95% of the office population               <ul style="list-style-type: none"> <li>5'0" (152cm) Woman to 6'4" (193cm) Man</li> <li>100 to 300 lbs. (45.4kg - 136kg)</li> </ul> </li> <li>Users outside the standard height range can be accommodated by Low or Tall Cylinder</li> </ul>
WEIGHT
<ul style="list-style-type: none"> <li>28 lbs. Conference/Task chair</li> <li>24 lbs. Armless chair</li> </ul>
TILT AND RECLINE
<ul style="list-style-type: none"> <li>17° recline plus 8° backrest tilt</li> </ul>
REFERENCE ANGLE BETWEEN SEAT AND BACK
<ul style="list-style-type: none"> <li>97.7° to 114.3°</li> </ul>

## Build Your Product Code



W 1 6 W M 14 W 507 - - - -

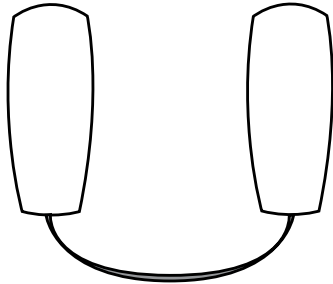
Monofilament Stripe  
Mesh in Platinum  
chosen from page 44

Wave Textile in Navy  
chosen from page 42

COMPONENT	CODE	BASE MODEL PRICE	<b>\$806</b>
LINE	(W)	Diffrient World Chair	-
STYLE	(1)	Conference/Task Chair	-
ARMRESTS	0	Armless	-
	(6)	Fixed Duron Arms	<b>(\$82)</b>
	7	Fixed Duron Arms with Matching Textile - Available with textile covered seat only	\$108
	1	Adjustable Duron Arms	\$174
	2	Adjustable Duron Arms with Matching Textile - Available with textile covered seat only	\$199
FRAME COLOR	B	Black	-
	(W)	White	<b>(\$20)</b>
	V	Gray	-
BACKREST MESH STYLE	(M)	See page 44 and textile Samples for mesh color options and codes	-
BACKREST MESH COLOR	(14)	See page 44 and textile Samples for mesh color options and codes	-
SEAT MESH/ TEXTILE STYLE		Mesh (A,N,J)	-
		Textile Grade 0 (S,G)	\$31
	(W)	Textile Grade 1 (W,V,K)	<b>(\$72)</b>
		Textile Grade 2 (F,B,H)	\$113
		Textile Grade 3 (D,E)	\$153
SEAT MESH/ TEXTILE COLOR	(507)	See page 44 and textile samples for mesh color options and codes	-
CYLINDER	(-)	Standard 5"	<b>(-)</b>
	A	3" Return to Height Cylinder	\$43
	L	Low 3.75"	\$27
	T	Tall 5"	\$38
	F	High 8" w/18" Foot Ring	\$113
	R	High 8" Cylinder with 21" Foot Ring	\$156
	X	Extra-high 10" Cylinder w/ 18" Foot Ring	\$113
	Z	Extra-high 10" Cylinder w/ 21" Foot Ring	\$156
		<i>Requires glides</i>	
CASTERS/GLIDES	(-)	Standard Hard Casters	<b>(-)</b>
	S	Soft Casters	\$17
	G	Glides	\$22
BASE CAPS	(-)	Standard	<b>(-)</b>
SHIPPING	(-)	Individually Boxed	<b>(-)</b>
	B	Blanket Wrapped - See Terms and Conditions for minimum order requirements	-

Total: **\$980**

### Fixed & Height Adjustable Armrests



#### **Armless (Code: 0)**

**Description:** Chair with no armrests

---

#### **Fixed Duron Arms (Code: 6)**

**Description:** Armrests with duron pads. Fixed at 9.5" armrest height.

---

#### **Fixed Duron Arms w/ Matching Textile (Code: 7)**

**Description:** Armrests with duron pads covered in the same textile and color as the seat cushion. Fixed at 9.5" armrest height.

---

#### **Adjustable Duron Arms (Code: 1)**

**Description:** Height-adjustable armrests with duron pads.

---

#### **Adjustable Duron Arms w/ Matching Textile (Code: 4)**

**Description:** Height-adjustable armrests with duron pads covered in the same textile and color as the seat.

## TECHNICAL SPECIFICATIONS FRAME COLOR

---



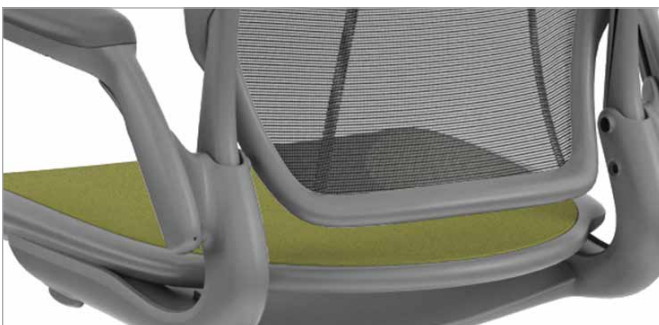
**Black** Code: B

**Description:** Black plastic parts with black plastic base



**White** Code: W

**Description:** White plastic parts with white plastic base



**Gray** Code: V

**Description:** Gray plastic parts with gray plastic base

## Standard cylinder 5" Code: -

**Description/Application:** The Standard cylinder offers a 5" height adjustment range. Appropriate for 95% of users.

---

## Low cylinder 3.75" Code: L

**Description/Application:** The Low cylinder offers a 3.75" height adjustment range. Appropriate for shorter users.

---

## Tall cylinder 5" Code: T

**Description/Application:** The Tall cylinder offers a 5" height adjustment range. Appropriate for tall users. Not available with foot ring option.

---

## Return to height 3" cylinder Code: A

**Description/Application:** This High cylinder offers a 8" height adjustment range. Appropriate for very tall users or settings requiring tall chairs. Comes with height adjustable 21" diameter foot ring.

---

## High 8" cylinder with 18" foot ring Code: F

**Description/Application:** High cylinder offers a 8" height adjustment range. Appropriate for very tall users or settings requiring tall chairs. Height adjustable 18" diameter foot ring.

---

## High 8" cylinder with 21" foot ring Code: R

**Description/Application:** The High cylinder offers a 8" height adjustment range. Appropriate for very tall users or settings requiring tall chairs. Comes with height adjustable 21" diameter foot ring.

---

## Extra-High 10" cylinder w/ 18" foot ring Code: X

**Description/Application:** Ideal for very tall users or settings that require a tall stool such as spaces with counters or bar areas. Comes with height-adjustable 18" diameter foot ring.

**Guidelines:** Must select glides or soft casters.

---

## Extra-High 8" cylinder w/ 21" foot ring Code: Z

**Description/Application:** Ideal for very tall users or settings that require a tall stool such as spaces with counters or bar areas. Comes with height-adjustable 21" diameter foot ring.

**Guidelines:** Must select glides or soft casters.

---

**Note:** We will implement new Clean cylinders across all chairs starting with the Standard cylinder 5". Clean cylinders keep the grease within the inside housing of the cylinder can.

Standard 5" Black and Gray clean cylinders will begin shipping July 21st."



**Standard hard casters** Code: -

**Description/Application:** 2.625" casters with hard accent ring for environments with carpeted floors

---

**Soft casters** Code: S

**Description/Application:** 2.625" casters with soft accent ring for environments with hard floors

---

**Glides** Code: G

**Description/Application:** Non-rolling glides for fixed-location use

**Standard Plastics & Foams** Code: -

**Description/Application:** No fire proofing. Chair is made with standard foams and plastics.

---

**CAL133-Approved Plastics & Foams** Code: C

**Description/Application:** Chair meets CAL133 requirements without using fire retardants

**Note:** As per law requirements, a CAL133 label is added to our chairs that require the CAL133 option.

**SHIPPING OPTIONS**

---

**Individually Boxed** Code: -

**Description/Application:** Chair is boxed

**Guidelines:** Ships fully assembled

---

**Blanket Wrapped** Code: B

**Description/Application:** Chair is blanket wrapped

**Guidelines:** Chair ships fully assembled. Blanket wrapped shipping is available for truckloads of 200 or more chairs.

# TECHNICAL SPECIFICATIONS TEXTILES

CATEGORY	NAME (GRADE)	SELLING POINT	DIFFRIENT WORLD	AVAILABLE COLORS
Mesh	Monofilament Stripe	Elastic composition that achieves strength through its distinctive weave structure to provide unmatched support.	Back	Black, Carbon, Platinum, Green, Atlantic, Amber
	Silver Check	Woven with monofilament and silver-plated yarns, Silver Check has a subtle metallic shimmer that creates a sophisticated finish.	Back	Alloy, Topaz
	Catena	Pure, clean weave—free of any additional patterns or motifs—in colors inspired by the rich hues of spices.	Seat & Back	Black, Caraway, Cornflower, Poppy Seed, Bayberry
	Dash	Designed to resemble embroidery floss, but stronger, more responsive and lightweight.	Seat & Back	Platinum, Zinc
	Pinstripe	Inspired by the Brooklyn Bridge, Pinstripe explores the idea of “suspension.” Features a floating line of color for a distinctive aesthetic.	Seat & Back	Black, Cadmium, Citron, Crimson, Cyan, Graphite, Silver, White
Leathers	Vicenza (Grade 0)	Affordable, aniline-dyed leather produced from European hides. Receives special retannage which enriches the leather and tightens the grain.	N/A	Black, Dark Brown, Saddle, Night Blue
	Bizon (Grade 1)	Thick, rich grain with excellent light fastness. Plain pigmented finish with great stain protection & soft touch	N/A	Black, Miso, Terra
	Cervo (Grade 3)	Thickest leather in our collection. Provides soft pebble grain texture unmatched by any other leather in its class.	N/A	Sasso Nero, Mantefalcone, Aveto
Four-Way Stretch	Wave (Grade 1)	Developed for sportswear. Colors taken from hues of nature.	Seat	Black, Graphite, Smoke, Dark Brown, Rattan, Loden, Sage, Blue, Navy, Ultraviolet, Poppy, Cayenne
	Vellum (Grade 1)	Nylon, codura and elastic yarn for nice texture and durability.	Seat	Black, Graphite, Ash, Light Gray, Seal, Beech, Mahogany, Moss, Grass, Greenwood, Navy, Perwinkle, Pomegranate
	Ginkgo (Grade 2)	90% wool with vibrant and saturated colors.	Seat	Black, Charcoal, Walnut, Storm, Navy, Wheat, Green, Horizon, Harvest Orange
Antimicrobial	Lotus (Grade 1)	Water repellant and easy to clean. Ideal for healthcare and hospitality. Polyurethane with nylon backing.	Seat (Available on back as SOR)	Black, White, Shale, Hermatite, Walnut, Umber, Ochre, Verdant, Navy, Plum, Crocus, Eggplant, Earth Red, Lucky Red
Robust Fabrics	Squiggle (Grade 0)	100% Polyester. Design resembles ripples of water.	Seat	Ash, Chocolate, Sand, Espresso, Navy
	Bridget Stripe (Grade 2)	Renewable merino Wool with 5 color, 50 stripe pattern with extra durability.	Seat	Smoke, Kohl
	Sensuede (Grade 3)	Fabric with a suede touch	Seat	Ebony, Pewter, Cohoclote, Goldenrod, Olive, Pear, Persian, Oxblood

**Squiggle/Vertical** Code: S

Grade: 0

Colors:



106 Ash



208 Chocolate



262 Sand



275 Espresso



507 Navy

**Squiggle/Horizontal** Code: G

Grade: 0

Colors:



106 Ash



208 Chocolate



262 Sand



275 Espresso

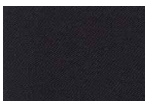


507 Navy

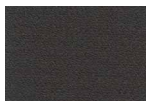
**Vellum** Code: V

Grade: 1

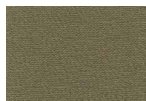
Colors:



101 Black



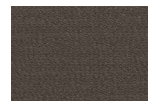
102 Graphite



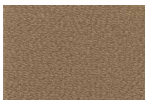
106 Ash



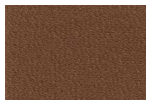
114 Light Gray



202 Seal



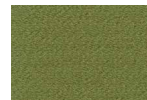
211 Beech



212 Mahogany



404 Moss



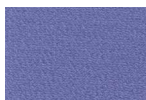
407 Grass



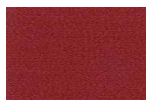
414 Greenwood



507 Navy



607 Periwinkle



713 Pomegranate

**Wave** Code: W

**Grade:** 1

**Colors:**



101 Black



102 Graphite



104 Smoke



201 Dark Brown



213 Rattan



402 Loden



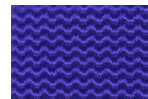
415 Sage



502 Blue



507 Navy



601 Ultraviolet



714 Poppy

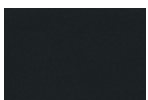


803 Cayenne

**Lotus** Code: K

**Grade:** 1

**Colors:**



101 Black



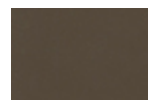
128 White



158 Shale



182 Hematite



2C4 Umber



281 Walnut



302 Ochre



459 Verdant



507 Navy



603 Plum



608 Crocus



624 Eggplant



757 Earth Red



758 Lucky Red

**Bridget Stripe/Vertical** Code: B

Grade: 2

Colors:



104 Smoke

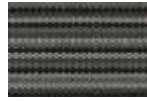


266 Kohl

**Bridget Stripe/Horizontal** Code: H

Grade: 2

Colors:



104 Smoke

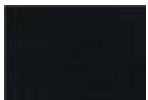


266 Kohl

**Ginkgo** Code: F

Grade: 2

Colors:



101 Black



197 Charcoal



281 Walnut



463 Green



507 Navy



556 Storm



568 Horizon



816 Harvest Orange

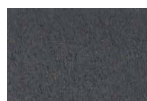
**Sensuede** Code: D

Grade: 3

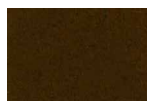
Colors:



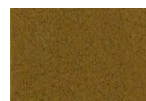
111 Ebony



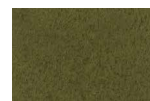
115 Pewter



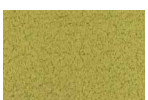
208 Chocolate



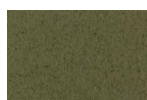
305 Goldenrod



406 Olive



411 Pear



413 Arbor



517 Persian



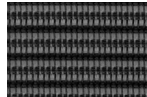
712 Oxblood

**Monofilament Stripe** Code: M

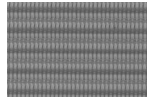
**Colors:**



10 Black



11 Carbon



14 Platinum



41 Green



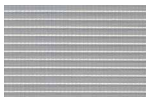
51 Atlantic



81 Amber

**Pinstripe** Code: N

**Colors:**



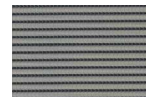
01 White



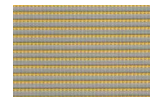
02 Silver



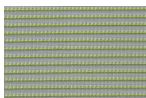
03 Graphite



10 Black



34 Cadmium Yellow



43 Citron



58 Cyan



74 Crimson

**Catena** Code: J

**Colors:**



10 Black



35 Bayberry



50 Cornflower



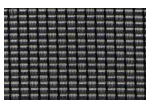
1A Poppy Seed



1B Caraway

**Silver Check** Code: C

**Colors:**



12 Alloy



32 Topaz

**Dash** Code: A

**Colors:**



14 Platinum



19 Zinc