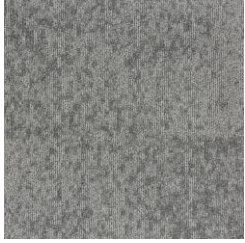
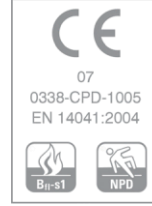


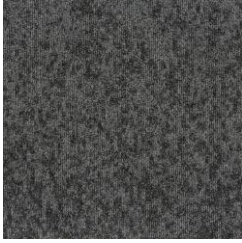
ARTLINES RAINFALL KARO HALI

TEKNİK ÖZELLİKLER

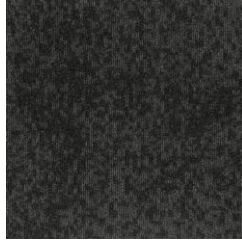
Boyut	:50 cm x 50 cm
İplik Türü	:%100 PA
Taban Türü	:Bitumen
İlmeç Yüksekliği	:5,0 mm ± 10%
Toplam Yükseklik	:7,5 mm ± 10%
İlmeç Ağırlığı	910 g/m ² ± 10%
Toplam Ağırlık	:4300 g/m ² ± 10%
Alev Almazlık	:Euroclass Bfl-s1
Boyama Şekli	:%100 SD Kendinden Boyalı
Dokuma Şekli	:Tufted Machine Gauge 1/10G
Renk Solmazlığı	:10 Yıl Garanti AATCC 16-04.Grade 4
Antistatik Özellik	:≤ 2Kv
Performans Değeri	:BS EN 1307 - Yoğun Trafik Class 33
Kutu İçi Karo Adeti	:20 adet



22901 LIGHT



22902 SHADE



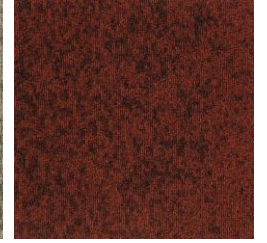
22903 DARK



22904 DEEP



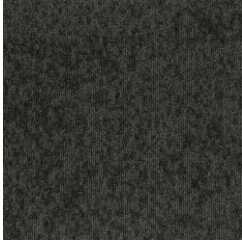
22905 STONE



22908 BRICK



22906 PAVE



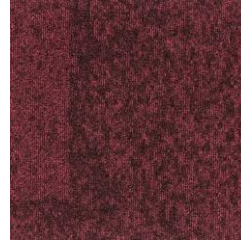
22907 GROUND



22909 BIRCH



22910 AIR



22911 BLOOM



22912 LEAF



ATECO ZEMİN MALZ.SAN.TİC.LTD.ŞTİ.
Poligon mah. Katar Cad.No:21/A 34460 Sarıyer / İstanbul Sarıyer
Vd - 099 051 0512
Tel: 0212 229 19 14 - 229 19 41 - 229 28 14 - 277 11 80
Fax: 0212 229 46 47
web: www.ateczemin.com / e-mail: info@atecozemin.com



İTO Tic.Sicil No: 660539
Mersis No:0099051051200013

ARTLINES RAINFALL KARO HALI



ARTLINES
PASPAS SİSTEMLERİ

ARTLINES
KARO HALI

ARTLINES
LVT

ARTLINES
OFİS MOBİLYALARI