



PathTM

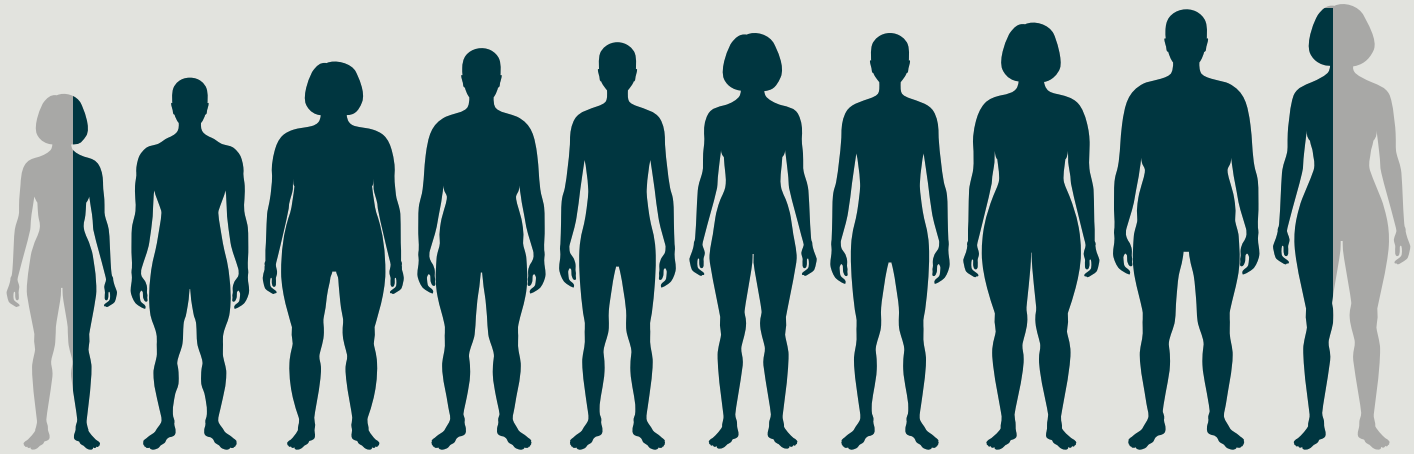
by Humanscale[®]

**A Path for
Every Body**

A Path for Every Body

Path is built differently, instantly adapting to each real body type straight out of the box. Most chairs are made to fit an imaginary “average” body type, forcing each real person sitting in it to adjust knobs and levers until they’re comfortable. The further that person’s height or weight is from the “average” midpoint, the more work it takes. As a result, most chairs are either adjusted incorrectly, or not at all –

resulting in poor posture, unhealthy work habits, and a host of more serious problems over time. Designed in collaboration with Todd Bracher Studio, Path uses physics to comfortably fit 95% of all body types the moment they sit, no complex adjustments required. Whoever you are, it’s been made to feel simple and body inclusive, performing effortlessly so you can too.



A Path for Everywhere

Path’s warm, versatile aesthetic is a direct response to the rapidly evolving workspaces of today and tomorrow. Its softly rounded silhouette accents any environment - whether in the office, at home, or anywhere in between, providing open, elevated simplicity. A suite of personalisation options goes a step further and lends Path chameleon-like adaptability, so it matches and enhances its surroundings, instead of redefining them.

Inclusivity Included

Like all Humanscale designs, Path is engineered for body inclusivity. Each Path contains a patented Gravity Mechanism™ that utilises bodyweight rather than bulky, complex controls. As you sit, the mechanism engages. When you recline, it gently lifts, so your body becomes the natural counterbalance, and is firmly supported wherever it stops. This creates virtual pivot points that allow Path to move with you in complete harmony.



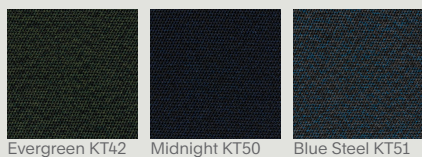
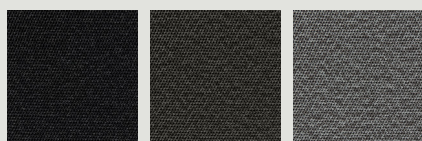
Cross section of seat showing
the internal Gravity Mechanism™



FormSense Eco Knit™

Equally as innovative as Path's design is its FormSense Eco Knit™, a mesh-like textile that conforms to the body, providing self-adjusted lumbar support and a tailored fit to every user, regardless of their height or weight. Each stitch is individually controlled, resulting in a beautifully responsive, personalised experience for the user.

In both the textile design and its application, FormSense Eco Knit™ contributes to Path's robust sustainability story. Its yarn is made with 100% post-consumer recycled polyester from upcycled plastic bottles and is knit to the exact shape of the chair, eliminating the need for cutting or sewing and creating zero waste.



Path is the world's most sustainable task chair

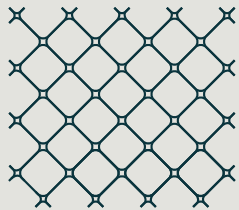
and builds on Humanscale's legacy of commitment
to minimal, ergonomic, and eco-conscious design.

Through the industry's most rigorous and comprehensive testing, Path has been certified 'climate positive', meaning each time one is made, the planet is measurably better off. When you choose a new Path forward, you're choosing a healthier planet for all of us.

A New Path Forward

With each new product, Humanscale aims to set higher standards for sustainable design. Path represents a new benchmark, upcycling more plastic waste than any other chair in the industry. It's also our 26th climate positive product, giving back more to the planet than it takes each time it is made. Humanscale remains the only manufacturer in our industry to have any products that are certified climate positive, let alone 26. Likewise, no other company matches our independent certifications across areas like:

- Healthy Materials
- Material Transparency
- Level® Certification
- Sustainable Operations



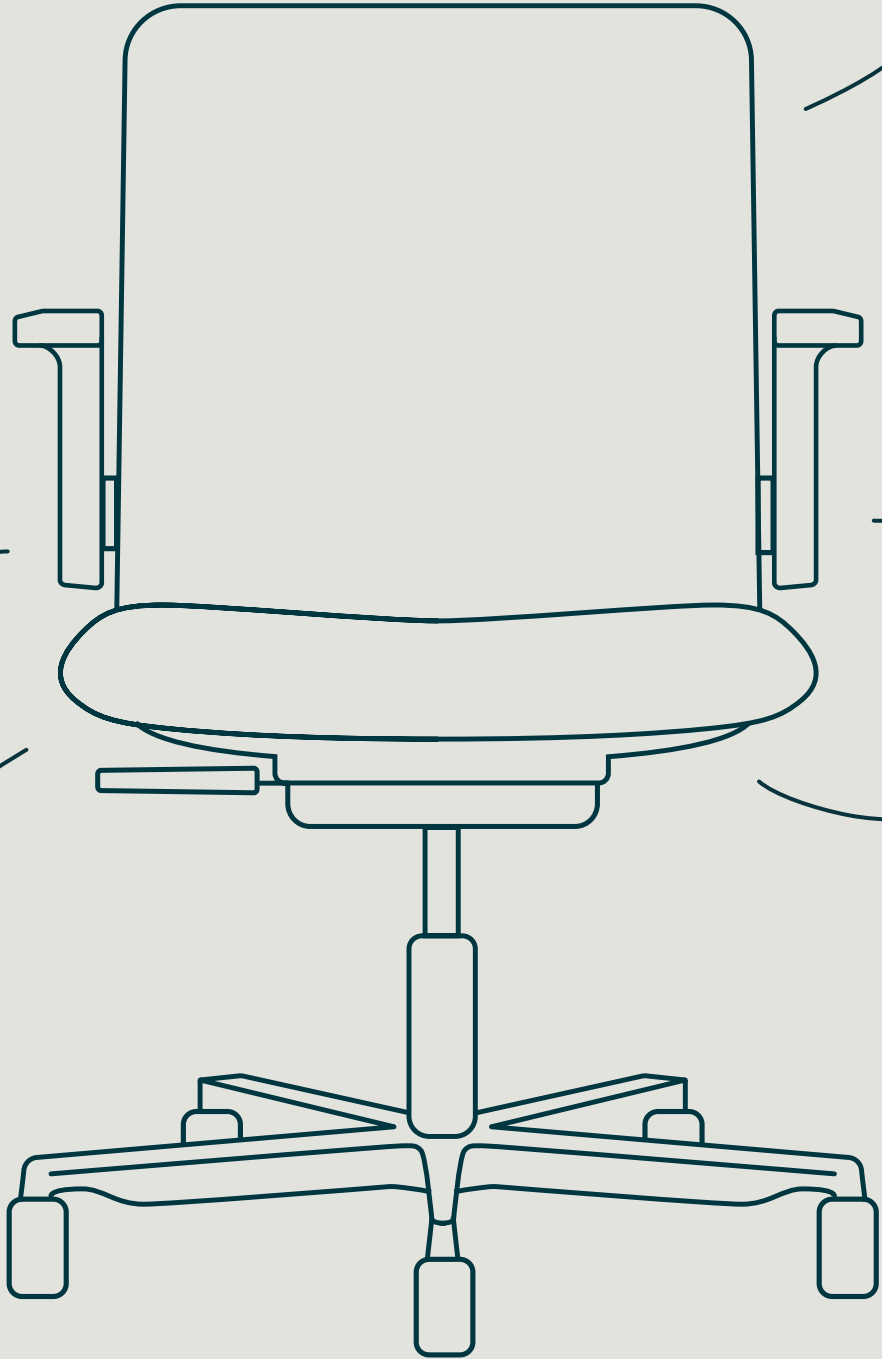
2.8
kilograms

Reclaimed
Fishing Nets



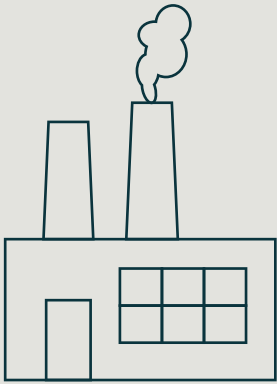
1.5
kilograms

Ocean Bound
Plastic



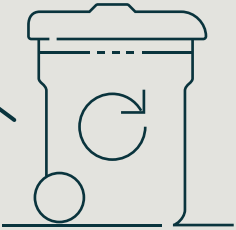
0.6
kilograms

PET Bottles



2.1
kilograms

Post-Industrial
Recycled Content



3.0
kilograms

Post-Consumer
& Post-Industrial
Mixed Content

Every Path chair leaves the world cleaner by removing and using nearly ten kilograms (22 lbs.) of recycled plastic from our planet.



Path is Living Product Certified by ILFI. This third-party certification verifies that Path measurably gives back more than it takes to make, setting a new benchmark for responsible manufacturing.

The Right Path for You

While Path is already designed to adapt effortlessly to any workspace, our full suite of textiles, chrome-free leathers, bases and arms are all available to lend complete personalisation. Whether it's for the board room, the living room, or the hotel suite, we make it simple to forge a Path of your very own - from the ground up - to ensure it perfectly matches your needs.





Features

- Incorporates nearly 10 kilograms (22 lbs.) of recycled material, including fishing nets from the ocean, which is the most harmful form of pollution to our marine ecosystems
- Free of Red List Chemicals, known as the “worst in class” materials, chemicals, and elements hazardous to humans and our environment
- Applying the innate laws of physics, instead of bulky levers and knobs, our Gravity Mechanism™ provides automatic support as soon as someone sits in the chair, and even when they recline, simply by using the sitter’s weight to provide a personalised sitting experience
- 15 Year Warranty*

*Full warranty information can be found at www.humanscale.com/warranty

Technical Specifications

	INCHES	MILLIMETERS
Seat Depth	16.30 " – 18.70"	414 - 475
Seat Height	15.55" – 20.87"	395 - 530
Seat Width	20.47"	520
Backrest Height	20.67"	525
Chair Width	23.82" (fixed) 24.41 (adjustable)	605 (fixed) 620 (adjustable)
Backrest Width	19.09"	485
Armrest Height	9.21" (fixed) 7.09" – 10.24" (adjustable)	234 (fixed) 180 – 260 (adjustable)
Armrest Length	9.25"	235
Distance Between Armrests	19.88" (fixed) 19.69" (adjustable)	505 (fixed) 500 (adjustable)
Height	34.65" – 39.76"	880 - 1010
Base Diameter	25"	635

	POUNDS	KILOGRAMS
Chair Weight (Armless)	35.5	16.1
Chair Weight (With Arms)	41	18.6

Base Options	Arm Style Options	Caster Options	Cylinder Options
<ul style="list-style-type: none"> • Black • Light Grey • Polished Aluminium with Black • Polished Aluminium with Light Grey 	<ul style="list-style-type: none"> • Armless • Fixed Arms (Plastic and Aluminium) • Adjustable Arms (Plastic) 	<ul style="list-style-type: none"> • Hard • Soft • Soft Braking 	<ul style="list-style-type: none"> • Standard • Low