

Path[™]
by Humanscale[®]





Less bad
is not good
enough.



MANUFACTURING'S IMPACT – GLOBAL WARMING



MANUFACTURING'S IMPACT – OCEAN PLASTIC





RECLAIMING OCEAN NETTING



An aerial photograph of a dense forest. The trees are mostly evergreens, with some deciduous trees showing yellow and orange autumn foliage. Sunlight filters through the canopy from the top left, creating a warm, hazy glow. The text is overlaid in the center of the image.

What if
**Manufacturing made the world
a better place?**

Humanscale makes the world
a better place.

Path™



Todd Bracher
Designer

PATH'S SUSTAINABILITY

PATH LEAVES THE WORLD *BETTER OFF* BY

6 kg of
Carbon Emissions
= 15
miles driven



PATH LEAVES THE WORLD *BETTER OFF* BY

15 gallons of
Water

= **16**

days drinking water





PATH LEAVES THE WORLD *BETTER OFF* BY

9.5 lbs. / chair of
Ocean Plastic

= **461** of plastic bottles
from the ocean



RECYCLED CONTENT BREAKDOWN



6.2

pounds

Fishing Nets



3.3

pounds

Ocean-Bound
Plastic



1.4

pounds

PET Bottles



4.6

pounds

Post-Industrial
Recycled Content



6.5

pounds

Post-Consumer
& Post-Industrial
Mixed Content







PATH MECHANICS

GRAVITY MECHANISM™



GRAVITY MECHANISM™

- Why is it patented? No spring force used like our typical counterbalance mechanism
- Chairs feels the same for everyone – whether someone is 5 feet or 6 feet tall - 100 or 300 pounds, the mechanism allows for a consistent sitting experience
- Virtual pivots – create a more consistent lumbar feel by combining the recline and tilt to one axis near the lumbar.
Additionally, it minimizes eye drop and reduces the difference in recline force between small and large users thereby accommodating a wider range of users



3D KNIT



HUMANSKALE'S FORMSENSE ECO KNIT™

FABRIC OPTIONS: FORMSENSE ECO KNIT™

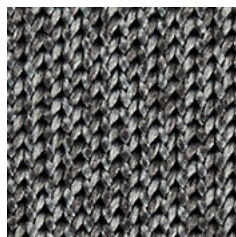
- Exclusively created for Path, our FormSense Eco Knit is a 3D Knit textile that is made of 100% post-consumer recycled polyester derived from upcycled plastic bottles
- 6 Knit Colors



KT10 – Soft Black



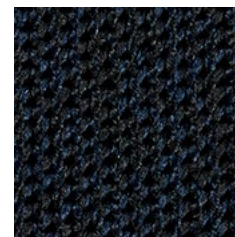
KT11 - Graphite



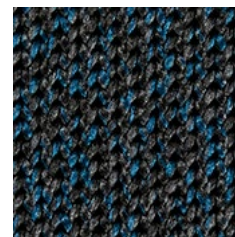
KT12 - Storm



K42 Evergreen



KT50 - Midnight



KT51 - Blue Steel



LONG-LASTING TEXTILES





3D KNIT



DURABILITY OF COMPONENTS STORY



ARM PADS





CYLINDERS

Standard



vs.

Path



CUSHIONS

- Contoured Cushions sculpted to match body contours and reduce pressure
- Thick cushions produce a soft feel and support long-term comfort
- Glue-less cushions are an environmentally friendly solution and use less materials



COLOR AND COMPONENT OPTIONS

FRAME AND TRIM OPTIONS

- Black or Light Gray Frames
- Matching or Polished Aluminum Base



**Black Frame /
Matching Base**



**Light Gray Frame /
Matching Base**



**Black Frame /
Polished Aluminum Base**



**Light Gray Frame /
Polished Aluminum Base**

ARM STYLES

- Armless
- Fixed Arms
- Adjustable Height Arms



CASTERS

- Hard Casters
- Soft Casters
- Soft Braking



RECYCLED CONTENT BREAKDOWN

Source	Total Pounds (lbs.)	% Content per Chair	% Recycled Content
OCEAN PLASTIC:	9.49	23%	43%
Fishing Nets (Ocean Reclaimed)	6.24	15%	
Mixed (Ocean Bound)	3.25	8%	
POST-CONSUMER RECYCLED CONTENT:	1.39	3%	6%
PET Bottles (equivalent to 68 Water bottles)	1.39	3%	
POST-INDUSTRIAL RECYCLED CONTENT:	4.58	11%	21%
MIXED POST-CONSUMER & POST INDUSTRIAL:	6.49	16%	30%
TOTAL RECYCLED CONTENT:	21.95	52.76%	--
TOTAL VIRGIN CONTENT:	19.66	47.24%	--